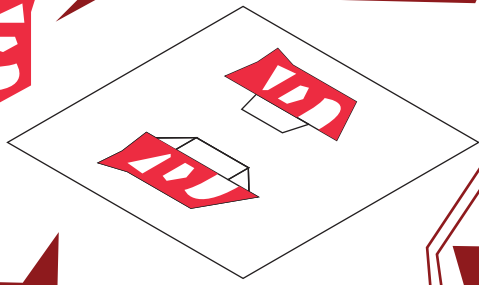


Hello! I am Insignio!
Lemme tell you how to do this.



Well first, you're gonna need a blade.



Like that one.
Hello!

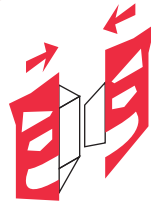
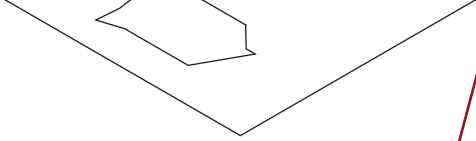


You see this line here?
Just cut from here to the other one.



OUCH!

Get me outta here,
Carefully...



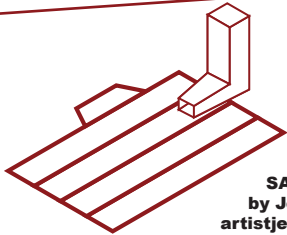
Here's the best part!



BINGO!



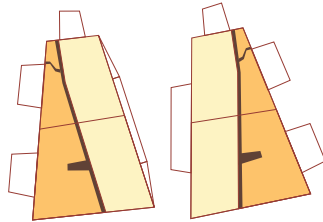
And that's the basics! Now let me show you some of the trickier areas.



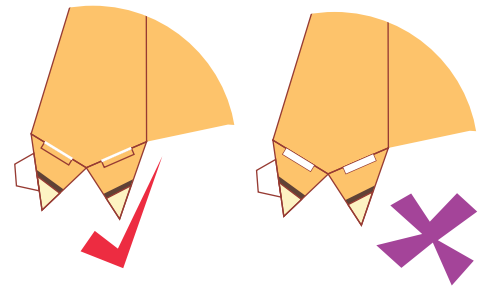
SARI SUMDAC
by Jeffrey Chuang
artistjeffc.blogspot.com

For the legs, you want to put the feet in before closing it all up.

Also do not mix up the leg pieces! They go together how they are printed out!

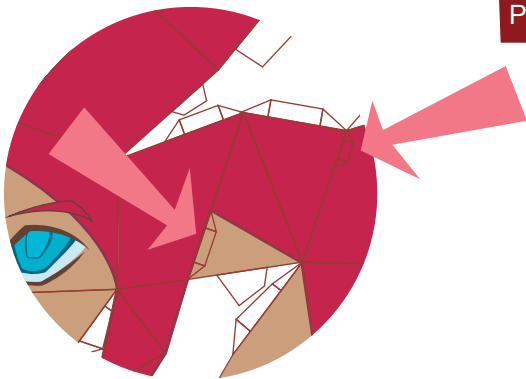


These pieces form the lower back. Attach them to their respective sides before combining the torso halves



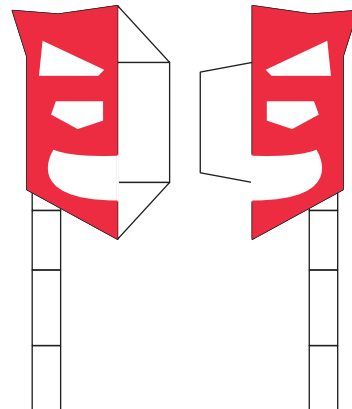
There are slits on the arms for the fingers. Don't cut them out! One cut should do it!

And that's pretty much it! I recommend using plain 8.5 by 11 inch paper. Please wait for the ink to dry before cutting! And of course, watch your fingers.

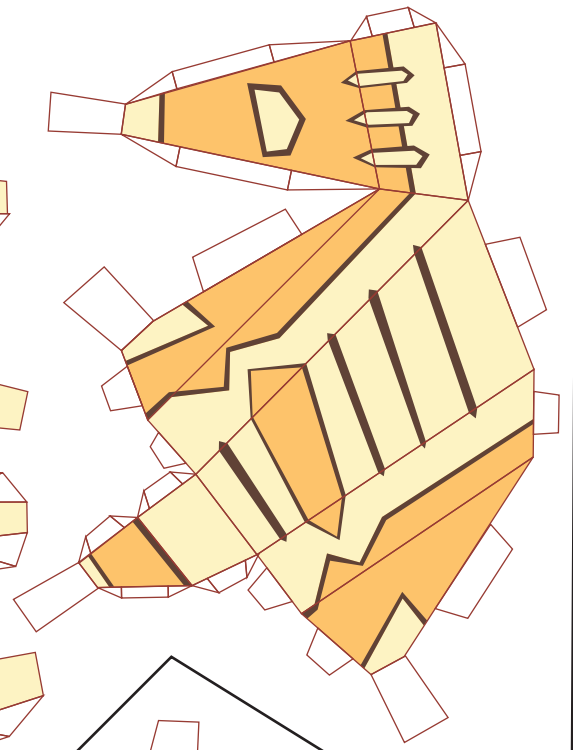
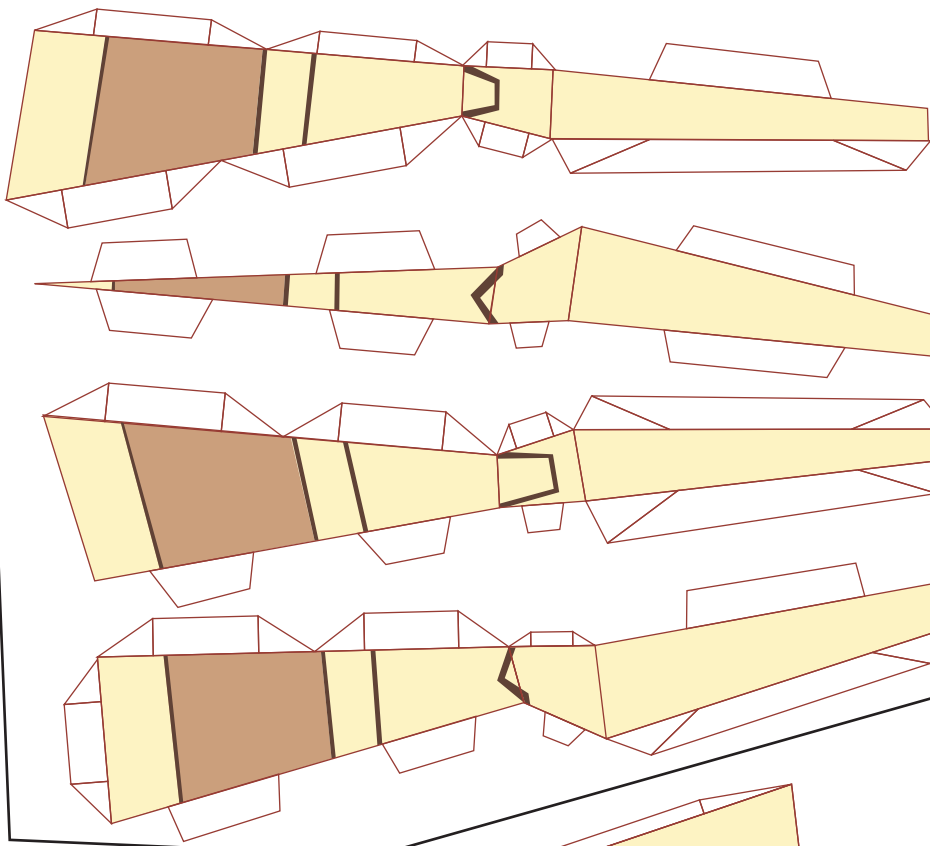


There are also slots for Sari's pigtails, and ears! Don't miss them potatohead!

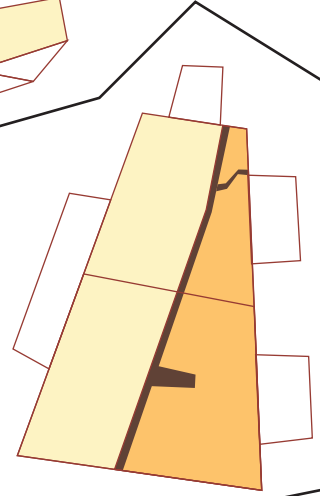
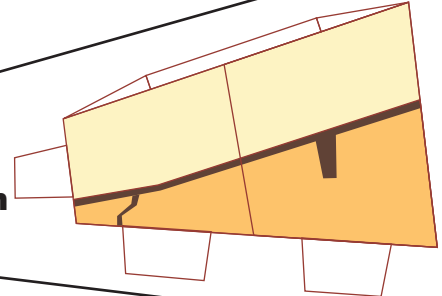
Also, Sari ain't no blockhead, so go easy on the creases that aren't tabs!



Once you are done with each individual piece, combine them together...
TIL' ALL ARE ONE!!!
Happy building!

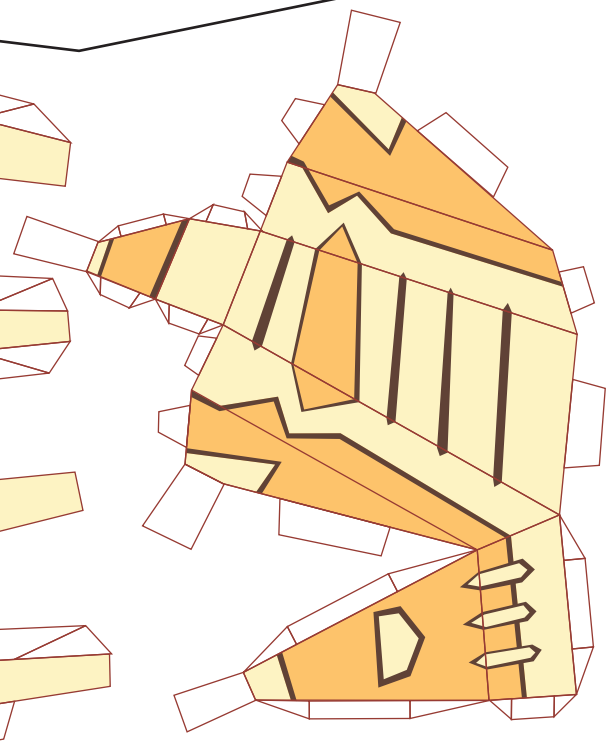
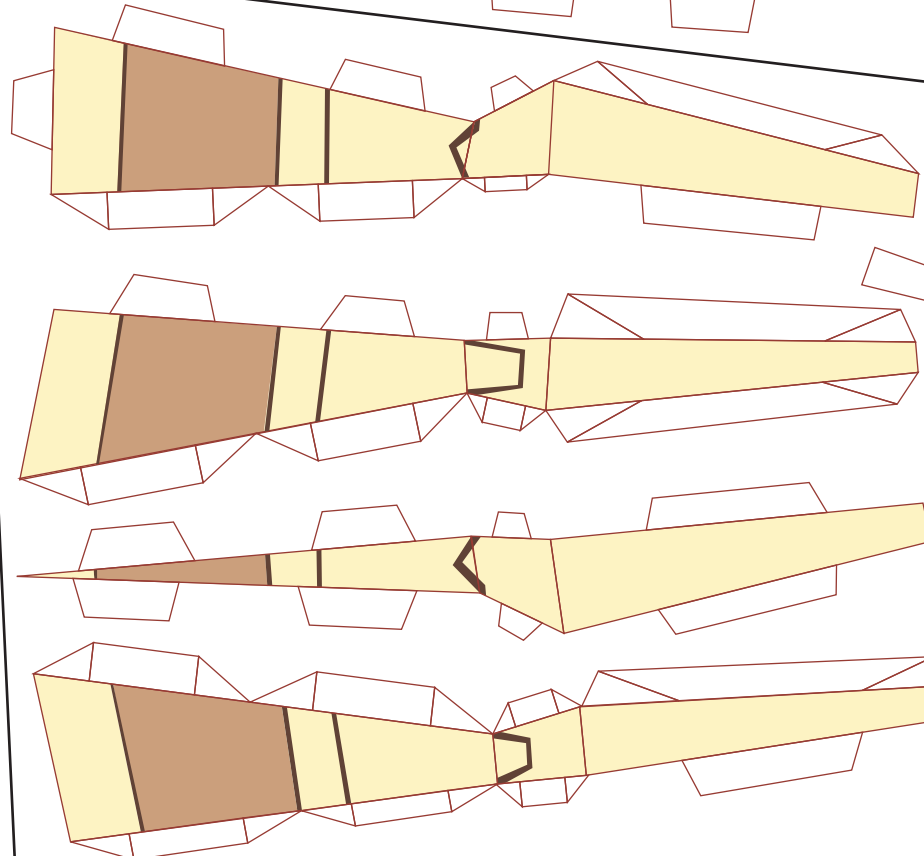


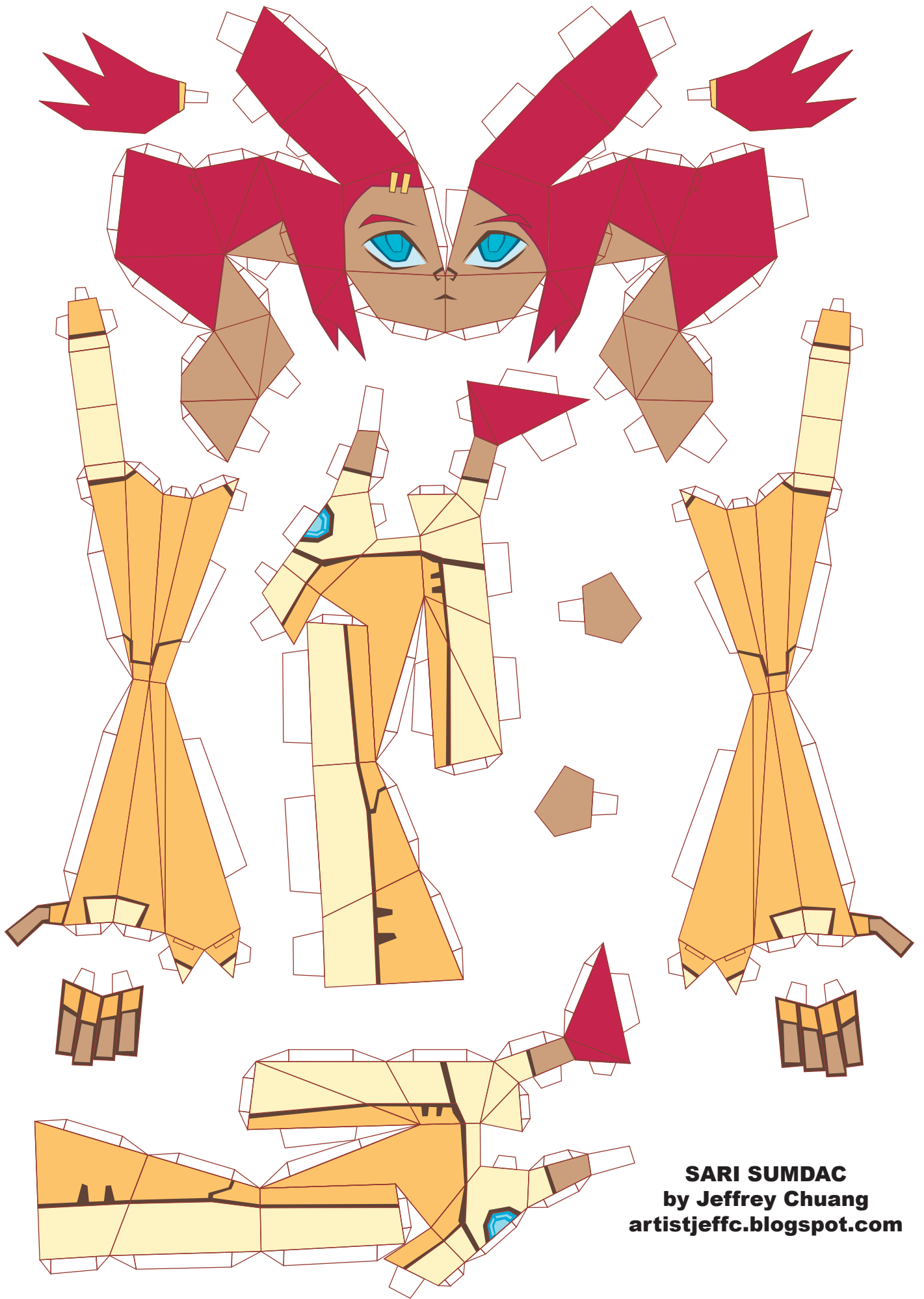
LEFT



RIGHT

SARI SUMDAC
by Jeffrey Chuang
artistjeffc.blogspot.com





SARI SUMDAC
by Jeffrey Chuang
artistjeffc.blogspot.com